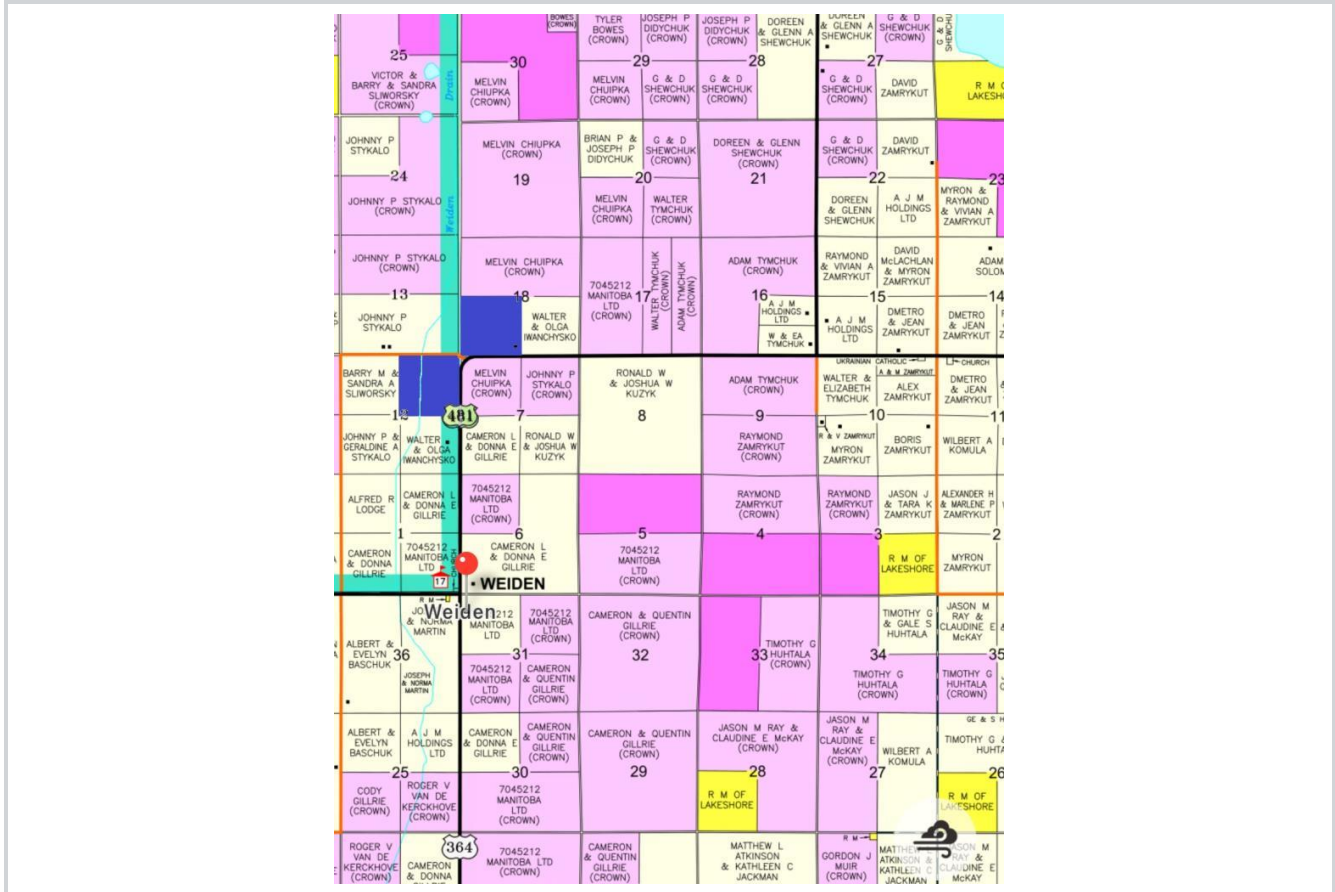




Sutton-Harrison Realty

\$400,000

319 ACRES in the RMs of Lakeshore & Mossey River., Rorketon, R0L 1R0



• Type: **Farm and Ranch** • Style: **Single Story**



Neil Fraser
 nfraser@sutton.com
 204-573-5137
 neilfraser.point2agent.com

Sutton-Harrison Realty
 Kelwood, R0J 0Y0

Property Summary

Type: **Farm and Ranch**

Style: **Single Story**

Garage: **No**

Lot size: **319 acres**

Has Suite: **No**

Taxes: **\$1,851 (2024)**

Development Level: **Built**



Description

319 ACRES in the RMs of Lakeshore and Mossey River. Rorketon, MB. (Weiden area, west of Toutes Aides). 2 quarter sections located adjacently. SW-18-29-16w in RM of Lakeshore AND NE-12-29-17w in the RM of Mossey River. ASKING PRICE - \$400,000. Yardsite on SW 18-29-16w has a 1982 built; 624 SF home with 672 SF double attached garage and a 1994 metal clad 1440 SF post shed. Seller says there are approx. 150 acres of workable land, and another approx. 90 acres improvable. For more info or to arrange a showing please call your REALTOR® of choice. MLS # 202400250



Information is deemed to be correct but not guaranteed.