



# Sutton-Harrison Realty

## \$2,500,000

### 2820 Acre Cattle Ranch in the RM of Lakeshore, Rorketon, R0L 1R0



• Type: **Farm and Ranch** • Style: **Single Story**



**Neil Fraser**

nfraser@sutton.com

204-573-5137

neilfraser.point2agent.com

**Sutton-Harrison Realty**

Kelwood, R0J 0Y0

## Property Summary

Type: **Farm and Ranch**

Style: **Single Story "3 homes on 2 yardsites"**

Garage: **No**

Lot size: **2820 acres**

Has Suite: **No**

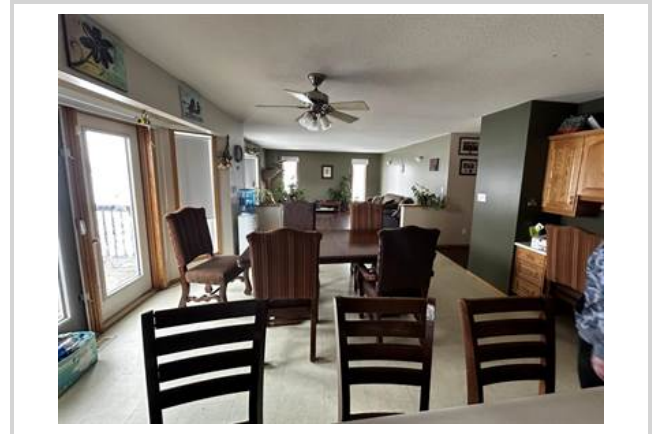
Year Built: **2002**

Taxes: **\$13,664 (2023)**

Development Level: **Built**

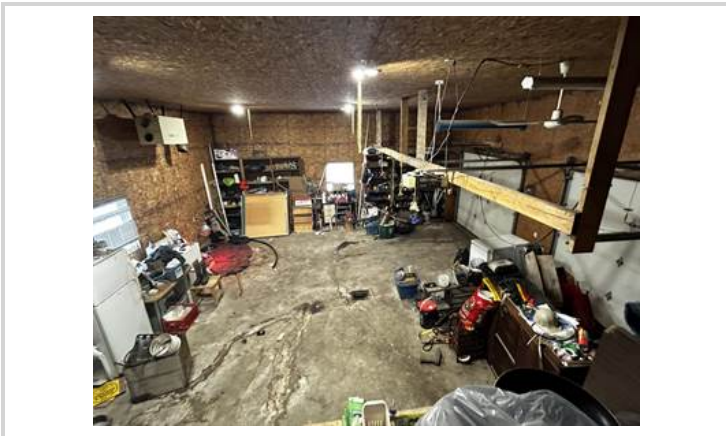
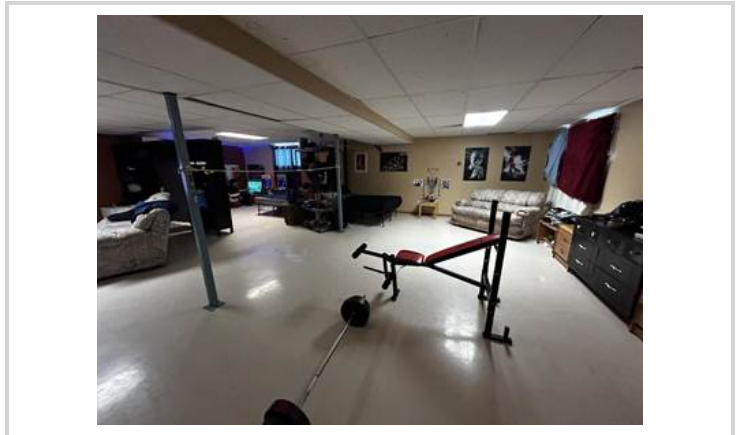
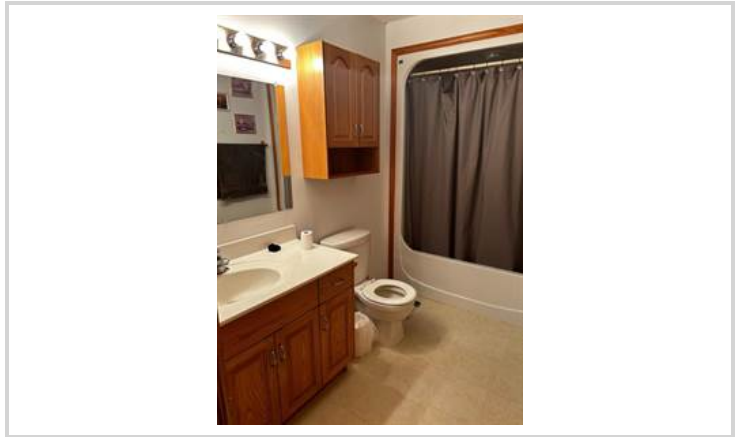
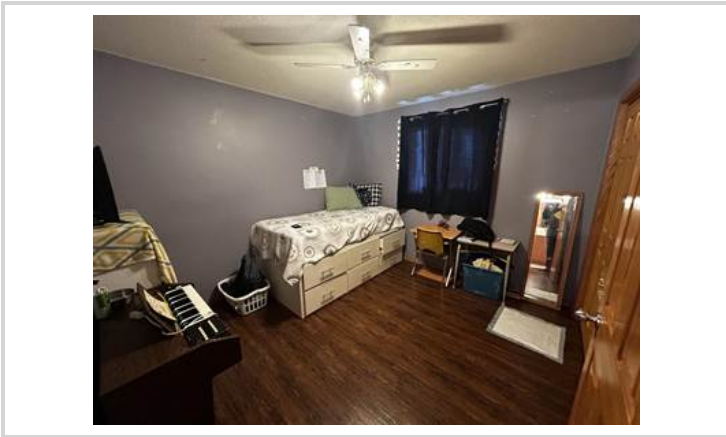
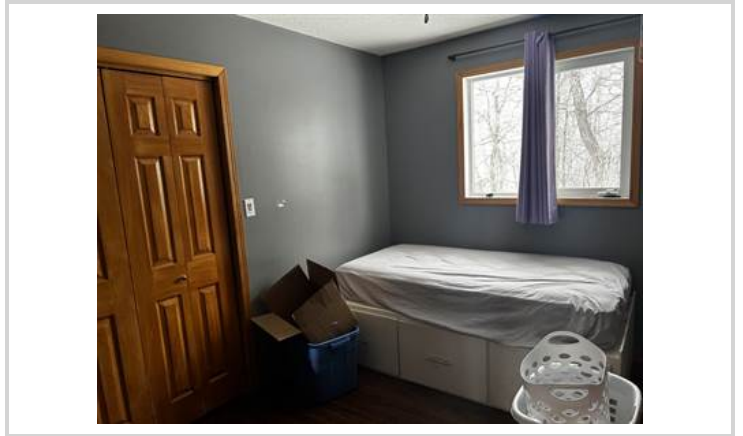
## Description

2,820 Acre Cattle Ranch in the RM of Lakeshore. Rorketon, MB. (Moose Bay area; near Lake Dauphin) 18 quarters of land mostly connected, Featuring 2 yardsites with 3 homes. 2 Metal clad equipment sheds, metal clad shop and garage, other sheds, etc. Seller says there are approx. 955 acres of workable land, and another approx. 1270 acres could be improved for farming if required. Several Miles of New Fencing put up in 2023. Good gravel on one quarter, would make a good feedlot quarter. Farm should carry up to 350 cow/calf pairs. For more info or to arrange a showing please call your REALTOR® of choice. MLS # 202400241LAND PARCELS:NE 25-27-17w 160 ACRES roll 52500NW 25-27-17w 160 ACRES roll 52600SW 25-27-17w 160 ACRES roll 52800NE 35-27-17w 160 ACRES roll 54200NW 35-27-17w 160 ACRES roll 54300SE 36-27-17w 160 ACRES roll 54800SW 36-27-17w 160 ACRES roll 54900NE 3-28-17w 100 ACRES roll 86700SE 3-28-17w 160 ACRES roll 87100NE 10-28-17w 160 ACRES roll 88500NW 10-28-17w 160 ACRES roll 88600SE 10-28-17w 160 ACRES roll 88700SE 12-28-17w 160 ACRES roll 89700NW 13-28-17w 160 ACRES roll 90000NE 14-28-17w 160 ACRES roll 90300SW 14-28-17w 160 ACRES roll 90600NE 16-28-17w 160 ACRES roll 91100SE 16-28-17w 160 ACRES roll 91300





Additional Photos





Additional Photos





Additional Photos





Additional Photos





Additional Photos





Additional Photos





Additional Photos





Additional Photos





Additional Photos





Additional Photos





# Additional Photos





*Information is deemed to be correct but not guaranteed.*